

## Fuelling products

# Spring set demand control valves

F375, F377, F378

F375 (3-inch), F377 (4-inch) and F378 (6-inch) spring set demand control valves



These demand regulators are basically the same units as the Meggitt air set valves except they utilize an adjustable spring to achieve control pressure. These controls can be used on vehicle applications where air pressure is not available. The addition of a solenoid valve (modification J, K or L [F375 only]) will add electrical deadman control to the valve. The valves can also be equipped with an additional air pilot valve, removing any requirement to have regulated air or air pressure gauges. The air reference port must be left open to the atmosphere but should be protected from contamination. Lockwire caps can also be provided to prevent tampering with adjustments.

Modifications H, J, K, S, V, W, and Y of the F375 upgrade the unit to a 3-inch Meggitt eliminator valve. Modifications J, K, L, S, V, W, and Y of the F377 upgrade the unit to a 4-inch Meggitt eliminator valve. The modifications referenced above also eliminate air-to-fuel interface.

### Features

- Valves can be pilot air operated
- No air to fuel interface
- No set air pressure regulation required on some modifications - see option list
- Eliminates the need to have air regulators or gages
- Ask about our eliminator valve version of the F377 or F375
- Surge control adjustment on valve
- Pressure control adjustment on valve
- Adjustments factory set
- Adjustment cap can be provided with lockwire type cap screws

### Key Features

- Working pressure - 200 PSI
- Closure times:  
dead man release - 0.8 sec  
[4.0-5.0 sec on modifications H, J, or K (F375 only)]
- Aircraft valve response - 0.75 sec
- Adjustable feature  
[optional with modification "AH" (F378) or "AN" (F377) only]
- Opening times - 10 to 50 seconds (set at 23 sec)
- Pressure control range - 30 to 60 PSI (70 to 110 PSI on "X" modification)
- Peak surge pressure - 275 PSI

### SPECIAL NOTES:

For proper operation:

Fuel line from the required remote sensing point must be .375 inch I.D. minimum.

Inlet piping must be straight for 15-inches and of same I.D. as valve.

## Meggitt Control Systems

Our product competencies & services:  
Aerospace valves | Thermal management solutions | Environmental control systems | Electro-mechanical products  
Ground fuelling products | Energy products | Aftermarket services

**MEGGITT**  
smart engineering for  
extreme environments

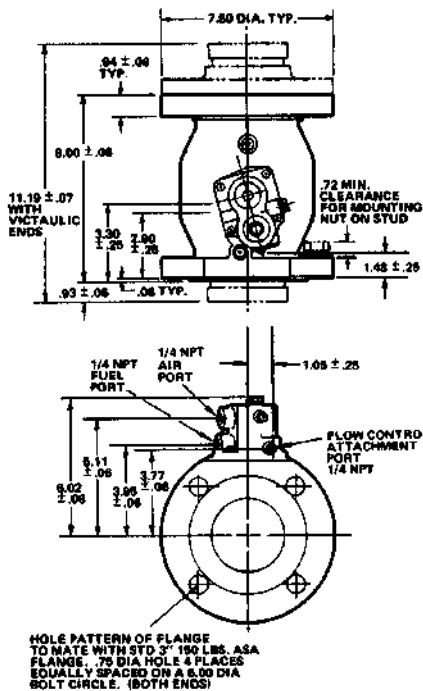
## Fuelling products

# Spring set demand control valves

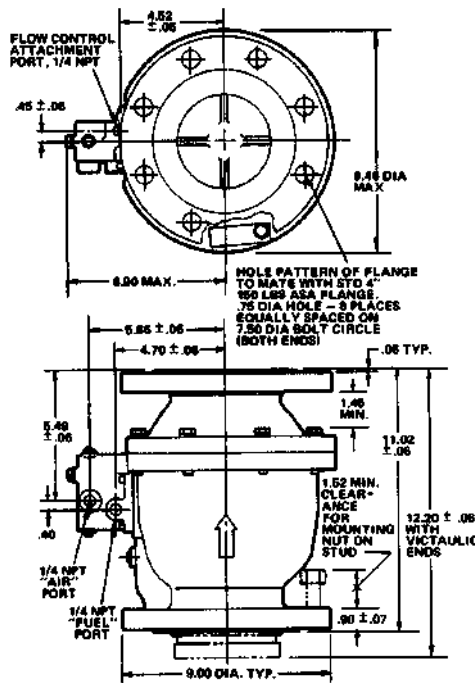
F375, F377, F378

### Key Dimensions

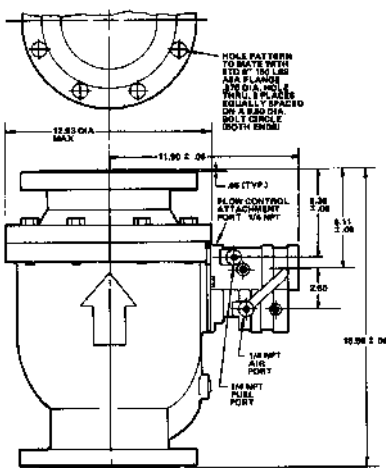
F375 (3-inch) dimensions



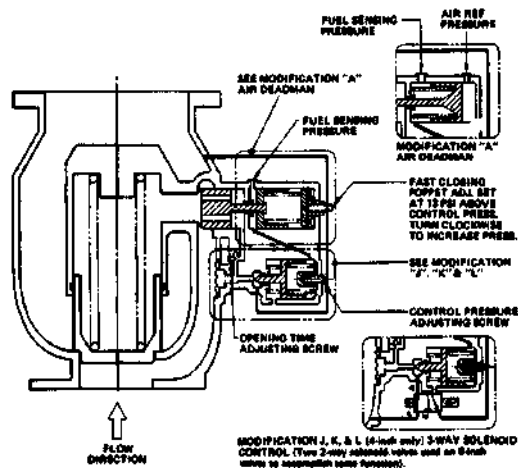
F377 (4-inch) dimensions



F378 (6-inch) dimensions



Functional schematic



### Contact

#### Meggitt North Hollywood

12838 Saticoy Street  
North Hollywood  
California 91605-3505  
USA

Tel: (818) 765-8160

Fax: (818) 759-2194

[www.meggitt.com](http://www.meggitt.com)

## Meggitt Control Systems

Our product competencies & services:  
Aerospace valves | Thermal management solutions | Environmental control systems | Electro-mechanical products  
Ground fuelling products | Energy products | Aftermarket services

**MEGGITT**  
smart engineering for  
extreme environments