



# FEMALE API Coupler



Mod. 1521

## APPLICATION

It's a Safety accessory in according with Directives ATEX 2014/34/EU and PED 2014/68/UE. The female coupler Mod.1521 Ridart is used for the bottom loading of hydrocarbons into tank trucks. This coupler ensures secure connection with an API adapter, as well as high speed loading. It is designed and manufactured according to API RP 1004.

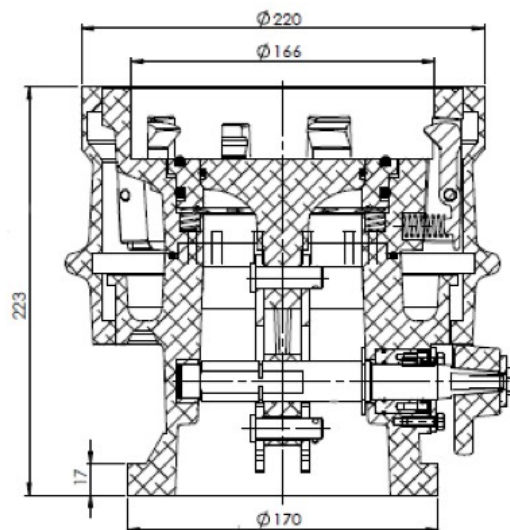
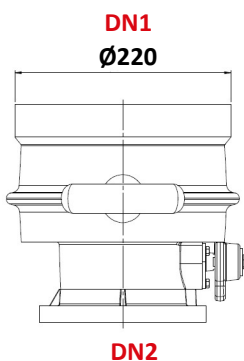
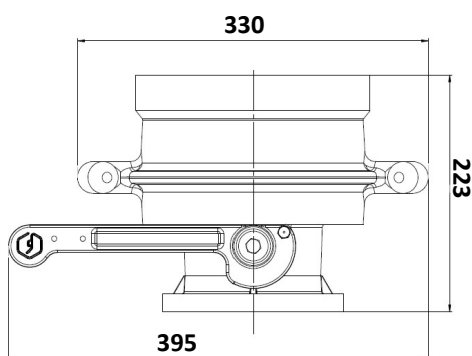
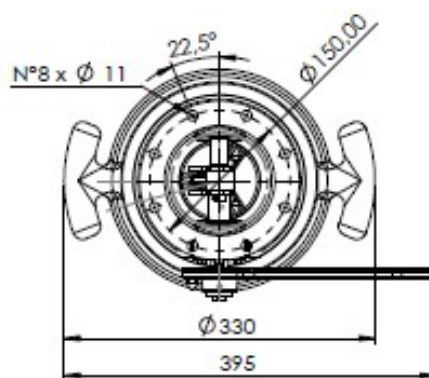


## CHEMICAL SUITABILITY

- Standard Model is for traditional fuel without additives and compatible chemical products.

CE 477 Ex II 3 G

PARTS	1521
CODE	1521-00
BODY	ALUMINIUM
INTERNAL COMPONENT	STEEL/STAINLESS STEEL/AISI 303/BRASS
GASKET	VITON®
DN1	API RP 1004
DN2	FLANGE 4" TTMA
MAX WORKING TEMPERATURE	- 20°C + 60°C
MAX WORKING PRESSURE	5 bar
MAX FLOW RATE	2500 L/MIN
WEIGHT	10 Kg.



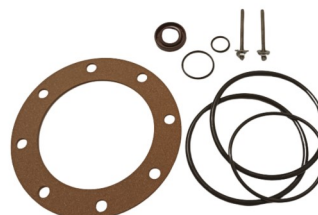
## INSTALLATION

- For correct installation follow the Directives and product User Manual.
- For custom application or maintenance write to: [quality@ridart.it](mailto:quality@ridart.it)
- Declaration of Conformity and User Manual are available on: [www.ridart.it/support](http://www.ridart.it/support)

## MAINTENANCE

- Periodically check the device is necessary to remove possible dirty.
- Always replace the product after fire or deflagration.
- In case of tampering warranty expires and safety protection is not guaranteed.

MAINTENACE KIT  
CODE: 1521-00-KIT



WATCH THE VIDEO