



# Adapter API RP 1400

Mod. 1527 & 1527L



Mod. 1527



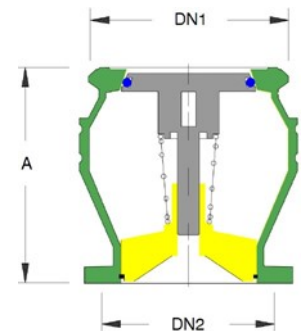
CE 477 Ex II 3 G

## APPLICATION

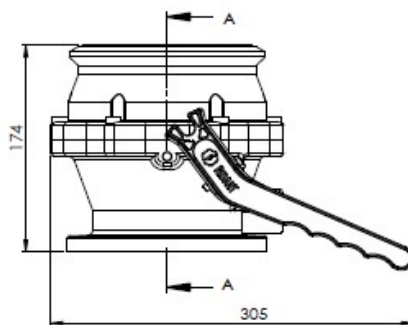
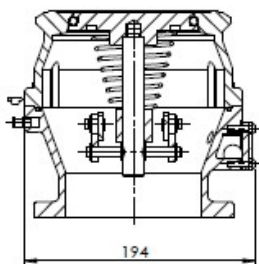
It's a Safety accessory in according with Directives ATEX 2014/34/EU and PED 2014/68/UE. The adapter API RP 1004 is used to prevent any possible leaking during the process of transferring fluids during the loading/discharge of tank trucks. There are two versions of the adapter, with and without a lever for manual opening.

## DIMENSIONS

Code	DN1	DN2	A
1527-00	API RP 1004	4" TTMA	174
1527L-00	API RP 1004	4" TTMA	174



SEZIONE A-A  
SCALA 1:3



PARTS	1527	1527 L
BODY	ALUMINIUM	ALUMINIUM
INTERNAL COMPONENT	STAINLESS STEEL	STAINLESS STEEL
FLANGE	4" TTMA	4" TTMA
GASKET	VITON®	VITON®
MAX WORKING TEMPERATURE	- 20°C + 60°C	- 20°C + 60°C
MAX WORKING PRESSURE	5 bar	5 bar
MAX FLOW RATE	2500 L/MIN	2500 L/MIN

## CHEMICAL SUITABILITY

- Standard Model is for traditional fuel without additives or compatible chemical products

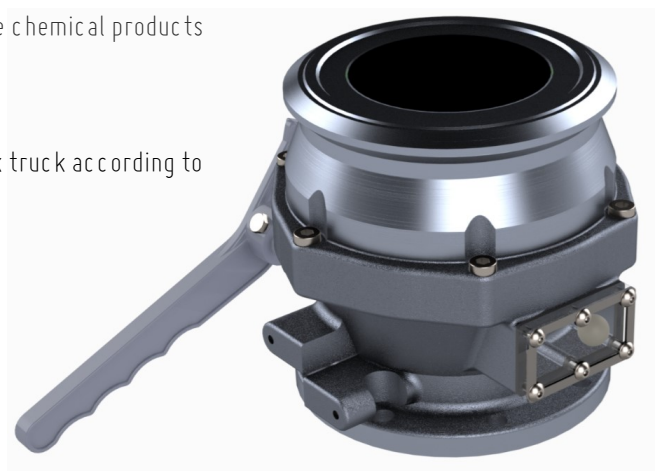
## INSTALLATION

- The adapter API RP 1004 can be installed on every section of the tank truck according to the number of products
- For correct installation follow the Directives and product User Manual.
- For custom application or maintenance write to: [quality@ridart.it](mailto:quality@ridart.it)
- Declaration of Conformity and User Manual are available on: [www.ridart.it/support](http://www.ridart.it/support)

## MAINTENANCE

- Periodically check the device is necessary to remove possible dirty.
- Always replace the product after fire or deflagration.
- In case of tampering warranty expires and safety protection is not guaranteed.

Mod. 1527 L



CE 477 Ex II 3 G

RIDART s.r.l. via Adua, 17 - 21045 Gazzada Schianno (VA) ITALY P.IVA/C.F. IT 01454770122  
www.ridart.it info@ridart.it +39 0332 463301

Product Certification, Declaration of Conformity, User Manual and Testing on: [www.ridart.it/support](http://www.ridart.it/support)  
The Data and Images are not binding. We reserve the right to make changes without notice. Pressure & Flow Tolerances ±20%.